

NOAA National Marine Fisheries Service

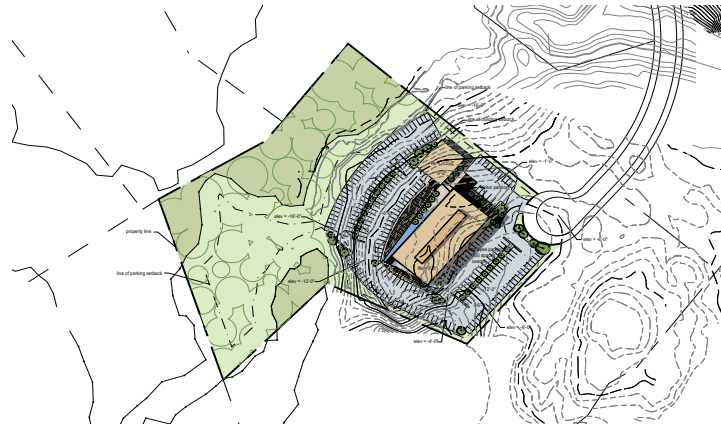


Located on a boulder strewn hilltop, the Northeast Regional Office of the National Marine Fisheries Service commands excellent views of Gloucester, its historic home and the Atlantic Ocean; the focus of its mission.

The strong historical and physical connection of the National Marine Fisheries Service to Gloucester informs the design of NOAA's Northeast Regional Office.

NMFS' historical tie to Gloucester is reflected in the use of traditional design elements and materials such as limestone cornices and string courses and walls of red brick, which is so prevalent in the area. However, NMFS is also a forward looking agency with the ability to develop new fishing equipment and methods to protect the ocean's resources. This innovative side of NOAA is communicated through the modern sensibility of the flexible exhibit space that also serves as the main lobby.

The building and its annex house the 14 departments that make up the Northeast Regional office. In addition to office space, the building includes conference and training rooms, testing laboratories and a museum.



NOAA National Marine Fisheries Services

(continued)

Together with the owner and general contractor, 4240 developed a brick clad precast concrete exterior wall system that accommodated a winter construction schedule, shortened the overall schedule and minimized cost.

4240 developed an extremely efficient building core and floor plate to facilitate space planning, minimize cost and total required area and maximize the use of the site.

location: Gloucester, Massachusetts
total square feet: 95,000
completion date: August 2008
estimated budget: \$10,250,000

integration of federal sustainable design goals which included specification of:

- recycled content products
- low VOC products
- certified wood products
- regionally manufactured materials
- construction waste recycling
- pre-occupancy building air flush-out to promote indoor air quality

